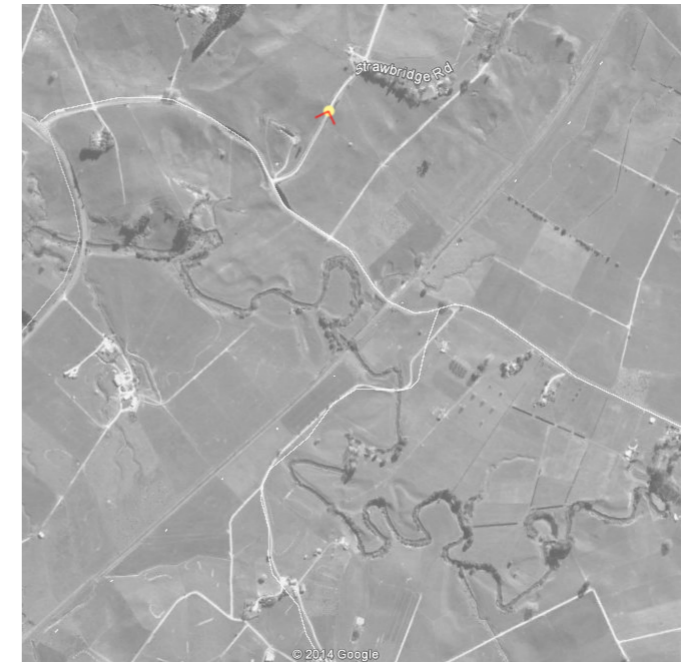




Map | Google Earth + Adobe Photoshop

Original photo | Sam Martin | 55mm DSLR Nikon D5100 | 6:08pm 26 Feb 2014 | E 1796002 N 5775227 (NZTM)



Map | Google Earth + Adobe Photoshop

NOTES

Photomontages are indicative and should be used as a guide to field observations

Photomontages have been created using a photograph, a wireframe 3D model and Adobe Photoshop. Wireframe 3D model has been created using 3DS Max by Virtual View Ltd.

All structures have been represented at +3m to proposed height which is noted as "worst case" scenario

Earthwire peaks are proposed at approximately 2m above top of structure

Photomontages are based on Revision 19 of the proposal by Waipa Networks Ltd

Original photo | Sam Martin | 55mm DSLR Nikon D5100 | 6:08pm 26 Feb 2014 | E 1796002 N 5775227 (NZTM)
Photomontage | Tessa O'Donnell | Virtual View Ltd + Photoshop | reading distance (TBC) | computer model elevation (TBC)
Structures | 122 - 138